

Pipe Notchers

Create the Perfect Notch in Seconds!

This line of notching equipment is top-quality, perfect for double corner joints, great for high production, and *always* backed by Scotchman's superior three-year warranty.

Ideal for steel, stainless steel, and non-ferrous tube & pipe construction, hand rails, gates & fences, car frames, roll cages, and more. Each piece is quickly and accurately notched and produces a gap-free fit ready for welding.

The manual and electric notchers are perfect for quick-fit 90° notches. Abrasive grinder/notchers provide the perfect saddle for unique angles on both round and square applications.

Manual Pipe Notchers



AL1

3/4", 1", & 1-1/4"

AL2

1-1/2" & 2"

AL3

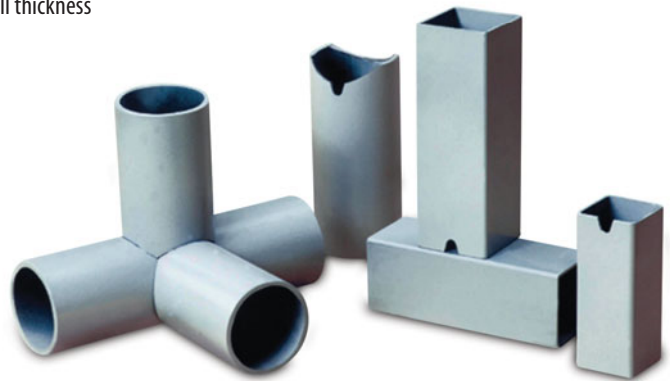
1-1/4" & 1-1/2"

ALU

Vent notch; 0.155" max. wall thickness

FEATURES

- Portable and easy to mount to any stationary surface
- Notch several diameters up to schedule 40 wall thickness at 90°
- Requires no change-over or costly attachments
- Made in the Netherlands



Electric Pipe Notchers

AL1-2E



AL1-2U



FEATURES

- Equipped to notch 3/4", 1", 1-1/4", 1-1/2" and 2" up to schedule 40 wall thickness at 90°
- Safety guards surround and protect notching dies
- Made in the Netherlands

SPECIFICATIONS

Motor Options (must specify)	3.5hp 230/460v, 3ph
Dimensions	30" x 13-1/2" x 11-1/2" (762mm x 343mm x 292mm)
Shipping Weight (may vary)	AL1-2E: 230 lbs. (104 kg) AL1-2U: 230 lbs. (104 kg)



Equipped with a vent notching die to quickly create a uniform vent-notch in round or square workpieces for galvanizing outflow

PIPE NOTCHERS

Pipe Notchers

Abrasive Grinder/Notchers

Constructed with heavy-duty base and frame, Scotchman's Grinder/Notchers operate smoothly with minimal vibrations. Each machine is designed for easy setup with one vise to hold all sizes of tube & pipe that is graduated in degrees and a mandrel with centerline adjustments. Tool-free belt and mandrel changes make transitions quick and easy.

AL100 SERIES FEATURES

- Notches via adjustments straight = 90° to 30° in tube or pipe from 3/4" to 3" O.D. in seconds (chart pg. 50)
- Comes with two belts and two pipe mandrels (1-1/4" & 1-1/2")
- 13 optional mandrels available to ensure gap free fit
- Top mounted deburring table
- Two axis precision crossfeed table with hand lever feed handle (AL100U-01) or handwheels (AL100U-02)
- Made in the Netherlands



AL100U-01



AL100U-02



SPECIFICATIONS

	AL100U-01	AL100U-02	AL150	AL150-HS
Belt	4" x 78-3/4" (100mm x 2,000mm)	4" x 78-3/4" (100mm x 2,000mm)	6" x 78-3/4" (150mm x 2,000mm)	6" x 78-3/4" (150mm x 2,000mm)
Speed	4.5 hp, 3,420 RPM	4.5 hp, 3,420 RPM	6 hp, 3,420 RPM	6 hp, 4,320 RPM
Grinding Capacity	1/2" to 3" O.D.	1/2" to 3" O.D.	1/2" to 4-1/2" O.D.	1/2" to 4-1/2" O.D.
Angle Range	Straight= 90° to 30°	Straight= 90° to 30°	Straight= 90° to 20°	Straight= 90° to 20°
Motor Options (must specify)	230/460v, 3ph 220v, 1ph	230/460v, 3ph 220v, 1ph	230/460v, 3ph 220v, 1ph	230/460v, 3ph *HS only comes in 3ph
Dimensions	L- 57" (145cm) W- 45-1/4" (115cm) H- 25-1/2" (65cm)	L- 57" (145cm) W- 45-1/4" (115cm) H- 25-1/2" (65cm)	L- 57" (145cm) W- 47-1/4" (120cm) H- 33-1/2" (85cm)	L- 57" (145cm) W- 47-1/4" (120cm) H- 33-1/2" (85cm)
Shipping Weight (may vary)	460 lbs. (209 kg)	460 lbs. (209 kg)	615 lbs. (279 kg)	695 lbs. (315 kg)

PIPE NOTCHERS

AL150 SERIES FEATURES

- Notches via adjustments straight = 90° to 20° in tube or pipe from 3/4" to 4-1/2" O.D. in seconds (chart on page 50)
- Two axis precision crossfeed table with both handwheels and hand lever feed handles.
- Comes with two belts and two pipe mandrels (1-1/4" & 1-1/2")
- 17 optional mandrels available to ensure a gap free fit
- Top mounted deburring table (AL150)
- BackHigh speed parts grinder (AL150-HS)
- Base has two built-in racks to store mandrels (AL150-HS)
- Made in the Netherlands



AL150

High Speed Parts Grinder



AL150-HS

- Ideal for stainless & aluminum
- 40% faster than the AL150
- Less heat, minimal discoloration

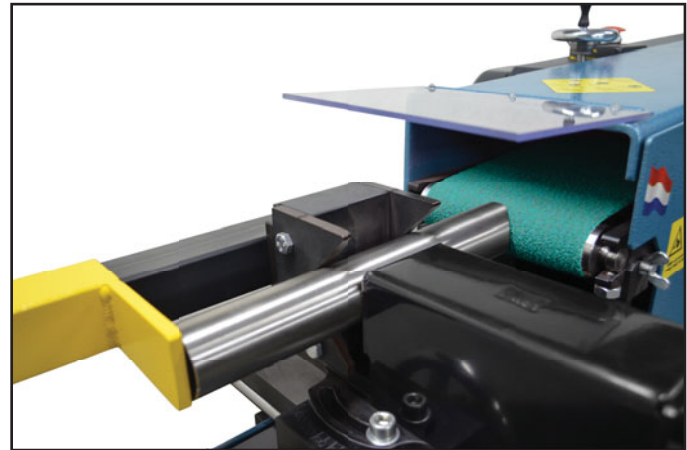
Pipe Notcher *Accessories*

BACK GAUGE ACCESSORY

For All AL100 and AL150 Models

- Use to set length positions and control depth of notch for repeatable and accurate part lengths.
- 4 ft. working length

Scan to watch
Back Gauge
in Action



Mandrels For Abrasive Grinder/Notchers

17 mandrel sizes available to ensure a gap-free fit.



PIPE NOTCHERS

MANDREL SPECIFICATIONS

Pipe	Tube	Decimal Size	AL100U-01 / AL100U-02 4" Part #	AL150 / AL150-HS 6" Part #
1/2"		0.840	A042.21.3	A043.21.3
	1.000	1.000	A042.26	A043.26
3/4"		1.060	A042.26.9	A043.26.9
	1.250	1.250	A042.32	A043.32
1"		1.330	A042.33.7	A043.33.7
	1.500	1.500	A042.38	A043.38
1-1/4"		1.660	A042.42.4	A043.42.4
	1.750	1.750	A042.44	A043.44
1-1/2"		1.900	A042.48.3	A043.48.3
	2.000	2.000	A042.50	A043.50
2"		2.375	A042.60.3	A043.60.3
	2.500	2.500	A042.63.5	A043.63.5
2-1/2"		2.875	A042.73.1	A043.73.1
	3.000	3.000	A042.76.1	A043.76.1
3"		3.500		A043.88.9
	3.500	3.500		A043.88.9
3-1/2"		4.000		A043.101.6
4"		4.500		A043.114.3

Pipe Notcher *Accessories*

Belts For Abrasive Grinder/Notchers

Productivity

In most applications, abrasive belt notchers dramatically increase productivity. Unlike conventional grinding wheels, abrasive belts are self-sharpening, continuously exposing fresh cutting points. This means no more dressing or replacing expensive grinding wheels.



$$\text{Productivity} = \frac{\text{belt cost} + \text{labor} + \text{overhead}}{\text{number of parts ground}}$$

Metal Removal

The rate of metal removal is determined by material to be ground, belt type, belt speed (SFPM) and the amount of pressure applied during grinding.

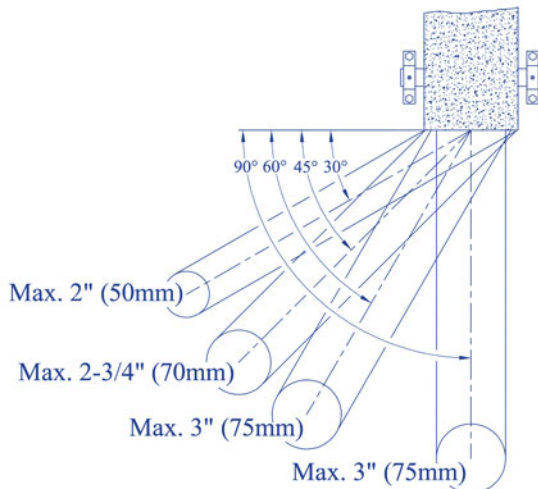
ABRASIVE GRINDING BELT SPECIFICATIONS			
Length/Grit	Product No.	Packaging	Description
4" x 78-3/4" (100mm x 2,000mm) / 36 GRIT	A044.00001	10 Belts Per Box	Rigid Belt for 3/4" & Larger Diameter
4" x 77-1/2" (100mm x 1,968.5mm) / 36 GRIT	A044.00003	10 Belts Per Box	Flexible Belt for 3/4" & Smaller Diameter
6" x 78-3/4" (150mm x 2,000mm) / 36 GRIT	A044.00002	10 Belts Per Box	Rigid Belt for 3/4" & Larger Diameter
6" x 77-1/2" (150mm x 1,968.5mm) / 36 GRIT	A044.00004	10 Belts Per Box	Flexible Belt for 3/4" & Smaller Diameter

*Notchers with serial numbers 0001000-0001300, 9701301-9701650 & 9801651-9801700 require 4" x 77" belts

PIPE NOTCHERS

TECHNICAL DATA - 4" BELT

Maximum Notch Per Angle
AL 100 (4" Wide Belt)



TECHNICAL DATA - 6" BELT

Maximum Notch Per Angle
AL 150 Series (6" Wide Belt)

